



arc
ON THE POINT

A photograph of a man and a woman on the deck of a sailboat. They are both wearing white t-shirts and are looking out at the ocean. The sun is setting on the horizon, creating a bright, shimmering reflection on the water. The sailboat's white sail is visible on the left side of the frame.

STAGE TWO
THE BOTANIC RELEASE

STAGE TWO THE BOTANIC RELEASE

WELCOME TO ARC ON THE POINT

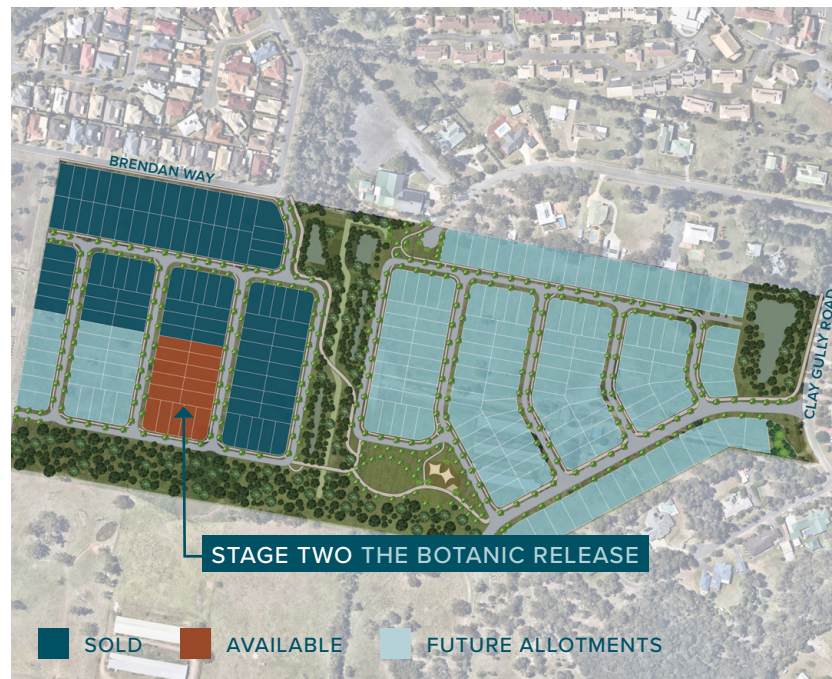
A well-connected community located in the heart of the Bayside's relaxed Victoria Point offering:

- Spacious homesites amongst contemporary treelined streetscapes.
- 4 hectares (nearly 10 acres) of open space, parkland neighbourhood playgrounds, picnic grounds and conservation areas.
- Connection to the bay, islands and everything the bayside has to offer.
- An easy 3 minute trip to Victoria Point Shopping Centre, Health Precinct, Schools and Employment Hub.

Get a closer bayside connection at Arc on the Point with Stage Two Land Release located just off Brendan Way, offering:

- 15 spacious homesites ranging in size from 352m² to 471m².
- Quiet neighbourhood within walking distance to open space and Dan Holzapfel Park with fitness equipment.

MASTERPLAN





arc
ON THE POINT



SALES AND INFORMATION CENTRE
11 Bunker Road, Victoria Point, QLD 4165

1300 617 363
info@arcvictoriapoint.com.au

www.arcvictoriapoint.com.au

urbex *designed for life*

DISCLAIMER: *Please note: Illustrations in the brochure are intended to be a visual aid only and do not necessarily depict the actual development. Urbex gives no warranty and makes no representation as to the accuracy or sufficiency of any description, photography, illustration, dimension or statement contained in this brochure and accepts no liability for any loss which may be suffered by any person who relies either wholly or in part upon the information presented. All information provided is subject to change without notice. Amenity displayed in the masterplan is proposed only and is subject to change without notice. November 2021.