

REFERENCE		MARKS		
STN	TO	BRG	DIST	ORIGIN
1	O.Screw in Backstone	103°01'10"	8.905	RP802223
1	O.Nail in Kb	170°14'	52.58	IS285982
20	O.Screw in Kb	86°20'	4.565	SP313636
21	OIP	174°31'30"	0.785	RP802223

For details of Lots 903-905 & 956, See Sheet 3.

For details of Lots 149-154, 176-181 & 221-224, See Sheet 4.

For details of Lots 182-185, 202-208 & 225-230, See Sheet 5.

For details of Lots 218-220 & 231-236, See Sheet 6.

For details of Lots 214-217, 237-245 & Easements A-F, See Sheet 7.



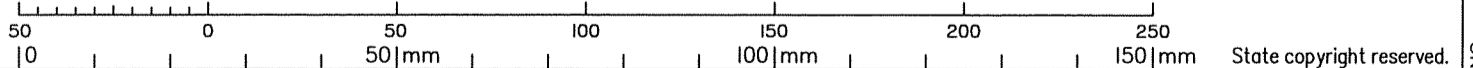
Peg placed at all subject corners unless shown otherwise.

Total Area of New Road
1.343 ha

PERMANENT MARKS				
PM	BRG	DIST	No.	ORIGIN
1-OPM	169°30'15"	52.771	186072	IS285982
16-OPM	46°53'	7.611	99156	SP328597
19-OPM (New Conn)	281°48'05"	363.33	106853	IS260075

M.G.A. COORDINATES GDA-2020							
STATION	EASTING	NORTHING	ZONE	P.U.	LINEAGE	METHOD	REMARKS
OPM No 106853	527293.347	6947412.858	56	0-016	Datum		
OPM No 186072	528084.541	6947208.987	56	0-016	Datum		

Scale 1: 2000 - Lengths are in Metres.



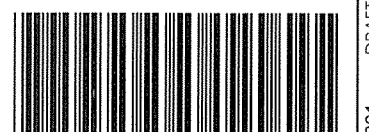
BRISBANE SURVEY GROUP PTY. LTD. (ACN 606 643 430) hereby certify that the land comprised in this plan was surveyed by the corporation, by Reigan Brian CRAWLEY, surveying associate, for whose work the corporation accepts responsibility, under the supervision of Stephen Patrick KELLY, cadastral surveyor and that the plan is accurate, that the said survey was performed in accordance with the Survey and Mapping Infrastructure Act 2003 and Surveyors Act 2003 and associated Regulations and Standards and that the said survey was completed on 18/04/2023.

[Signature]
Authorised Delegate
23/5/2023
Date

PLAN OF
LOTS 149 - 154, 176 - 185,
202 - 208, 214 - 245, 903 - 906, 955, 956 and
Easements A - F in Lots 240 - 245 respectively
Cancelling Lot 953 on SP313636 & Lot 954 on SP328597

LOCAL GOVERNMENT: REDLAND CITY COUNCIL LOCALITY: VICTORIA POINT
Meridian: MGA Zone 56 Vide SP292896 Survey Records: NO

Scale: 1: 2000
Format: STANDARD



SP333954

WARNING : Folded or Mutilated Plans will not be accepted.
Plans may be rolled.
Information may not be placed in the outer margins.

(Dealing No.)

4. Lodged by

(Include address, phone number, reference, and Lodger Code)

I. Existing		Created		
Title Reference	Description	New Lots	Road	Secondary Interests
51270154 51284427	Lot 953 on SP313636 Lot 954 on SP328597	185, 202, 203, 206-208, 214-220, 231-245, 906 & 955 149-154, 176-185, 202-207, 221-234, 903-905 & 956	New Rd New Rd	Emt's A-F _____

ENCUMBRANCE EASEMENT ALLOCATIONS

Easement	Lots to be Encumbered
721284588 (Emt H on SP313636)	955

MORTGAGE ALLOCATIONS

Mortgage	Lots Fully Encumbered	Lots Partially Encumbered
721065033	149-154, 176-185, 202-208, 214-245, 903-906, 955 & 956	-

REINSTATEMENT REPORT

- This plan follows and agrees with IS285982, SP313636 and SP328597 apart from minor measurement differences.

149-154, 176-185, 202-208,
214-245, 903-906, 955 & 956

Por.423

Lots

Orig

2. Orig Grant Allocation :

3. References :

Dept File :

Local Govt :

Surveyor : 20361

5. Passed & Endorsed :

By: Brisbane Survey Group Pty Ltd.

Date: 23/5/2023

Signed: *[Signature]*

Designation: Liaison Officer

6. Building Format Plans only.

I certify that :

- * As far as it is practical to determine, no part of the building shown on this plan encroaches onto adjoining lots or road;
- * Part of the building shown on this plan encroaches onto adjoining * lots and road

Cadastral Surveyor/Director* Date

*delete words not required

7. Lodgement Fees :

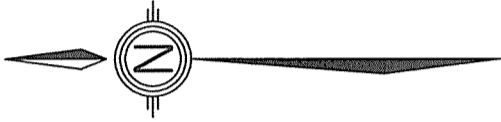
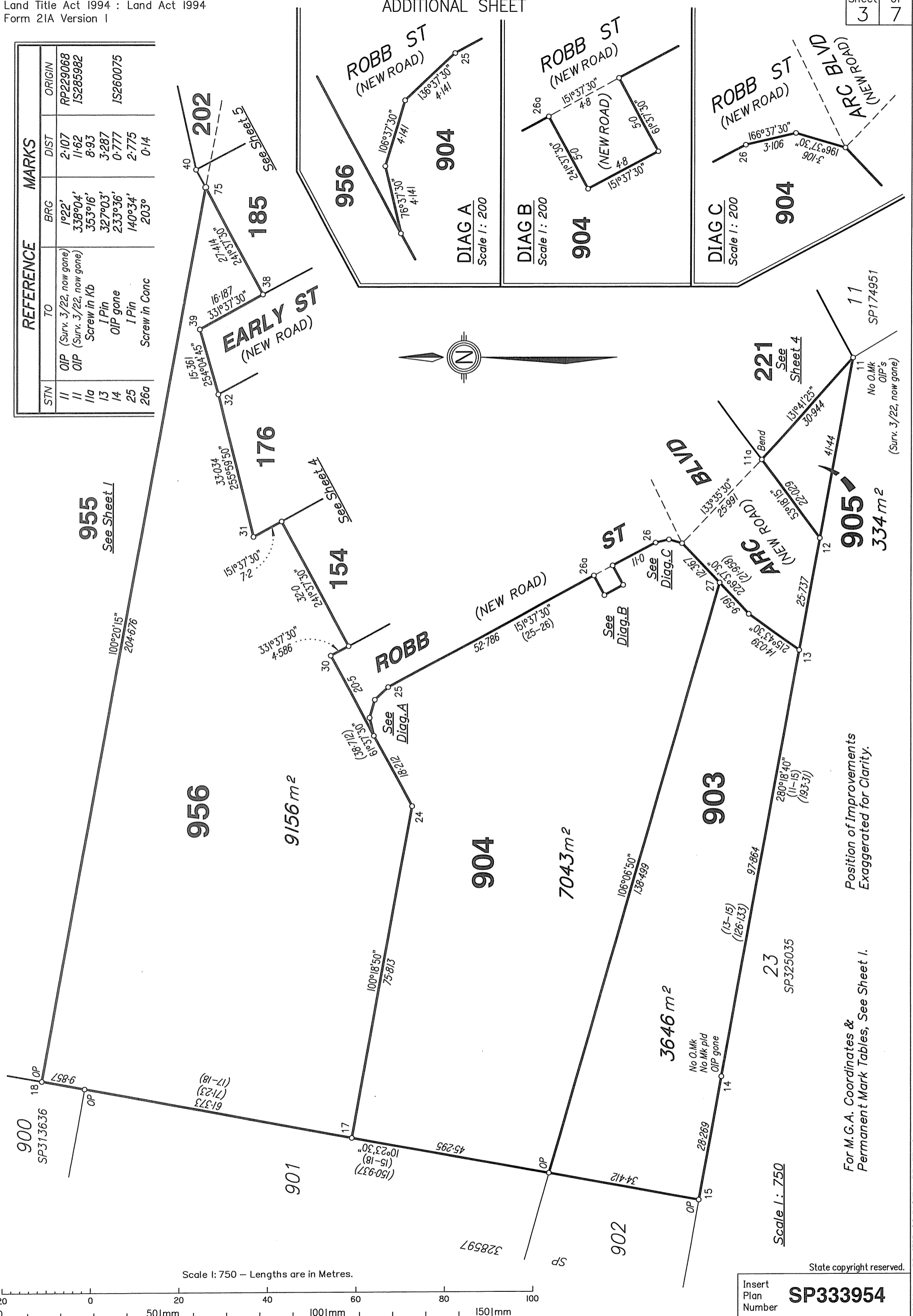
Survey Deposit	\$
Lodgement	\$
..... New Titles	\$
Photocopy	\$
Postage	\$
TOTAL	\$

8. Insert Plan Number

SP333954

ADDITIONAL SHEET

REFERENCE		MARKS	
STN	TO	BRG	DIST
11	OIP (Surv. 3/22, now gone)	1°22'	2.107
11	OIP (Surv. 3/22, now gone)	338°04'	11.62
11a	Screw in Kb	353°16'	8.93
13	1 Pin	327°03'	3.287
14	OIP gone	233°36'	0.777
25	1 Pin	140°34'	2.775
26a	Screw in Conc	203°	0.14



Scale 1:750 - Lengths are in Metres.

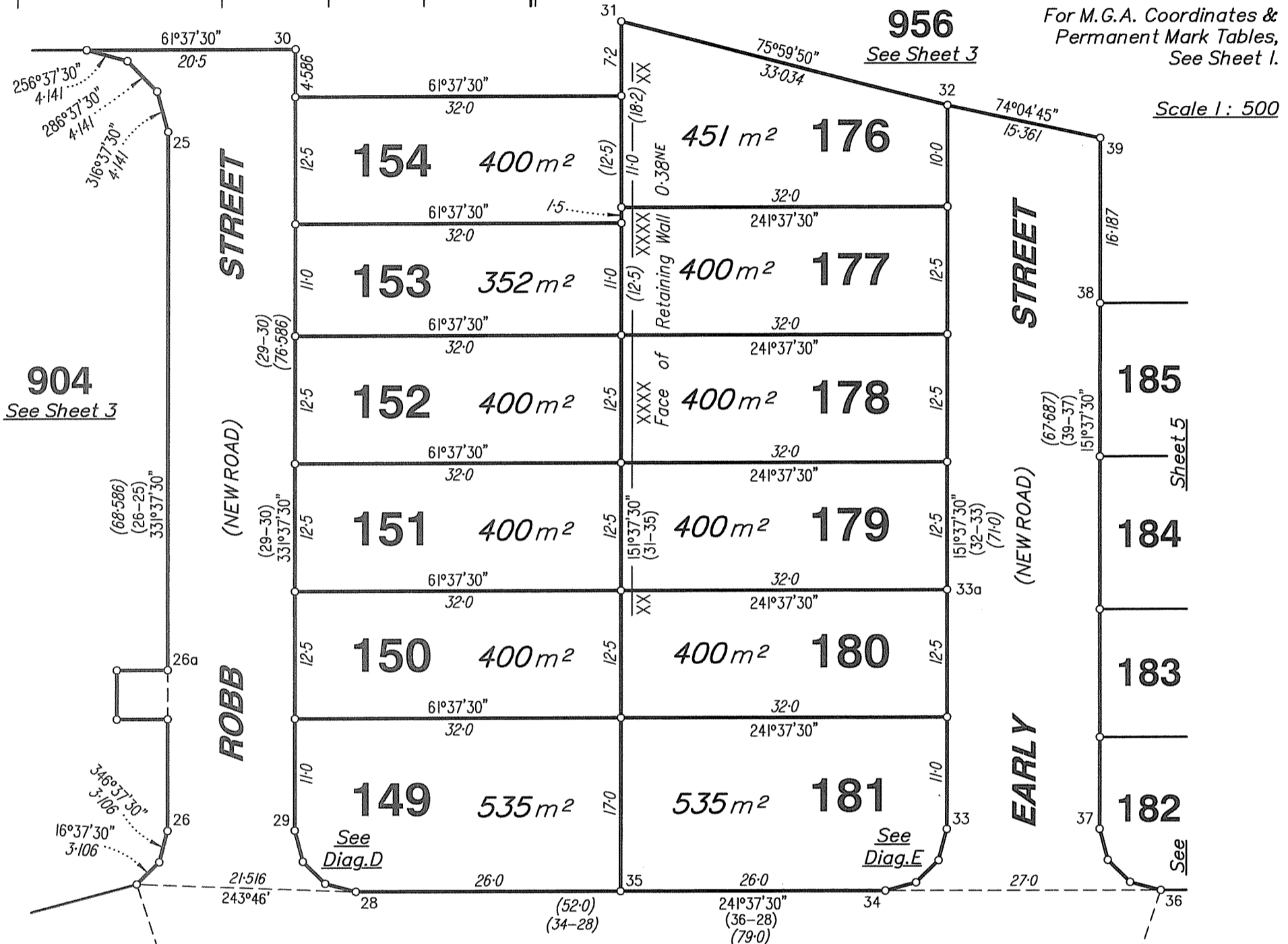
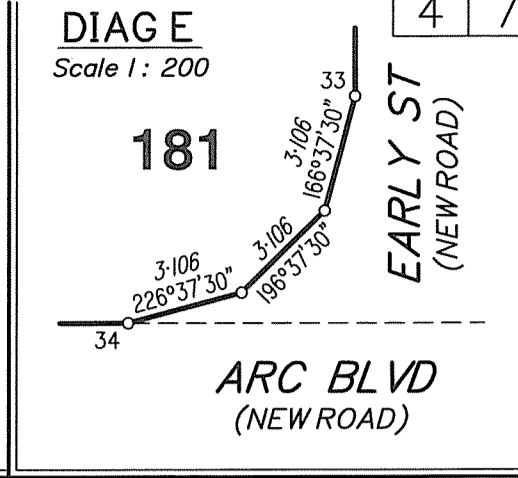
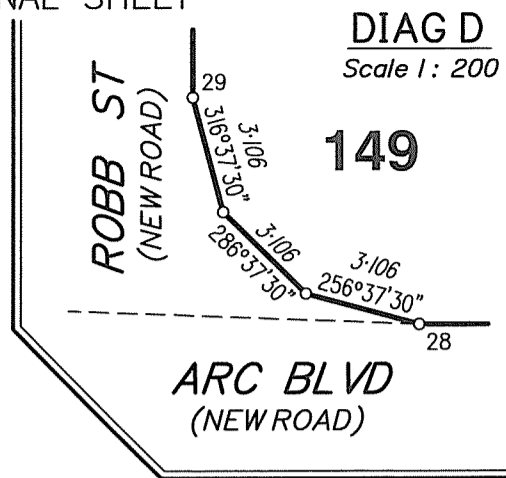
Position of Improvements Exaggerated for Clarity.

For M.G.A. Coordinates & Permanent Mark Tables, See Sheet 1.

State copyright reserved.

Insert Plan Number **SP333954**

REFERENCE		MARKS		
STN	TO	BRG	DIST	ORIGIN
11	OIP (Surv. 3/22, now gone)	1°22'	2.107	RP229068
11	OIP (Surv. 3/22, now gone)	338°04'	11.62	IS285982
11a	Screw in Kb	353°16'	8.93	
25	I Pin	140°34'	2.775	
26a	Screw in Conc	203°	0.14	
28	Screw in Conc	234°41'	6.708	
30a	Screw in Conc	181°04'	2.768	
32	Screw in Kb	87°45'	4.933	
33a	Screw in M/Hole	115°48'	4.032	
38	Screw in Conc	247°33'	1.996	
69	Screw in Chan	298°07'	6.463	



For M.G.A. Coordinates & Permanent Mark Tables, See Sheet 1.

Scale 1 : 500

904 See Sheet 3

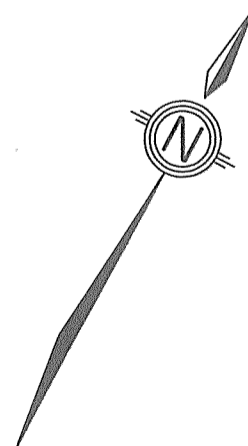
956 See Sheet 3

Sheet 5

Sheet 5

See

See



Position of Improvements Exaggerated for Clarity.

905 See Sheet 3

23 SP325035

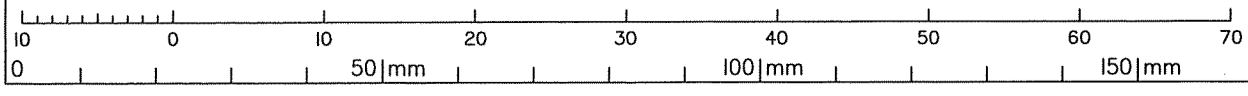
No O.Mk OIP's (Surv. 3/22, now gone)

11

Cov.A SP230714

SP174951

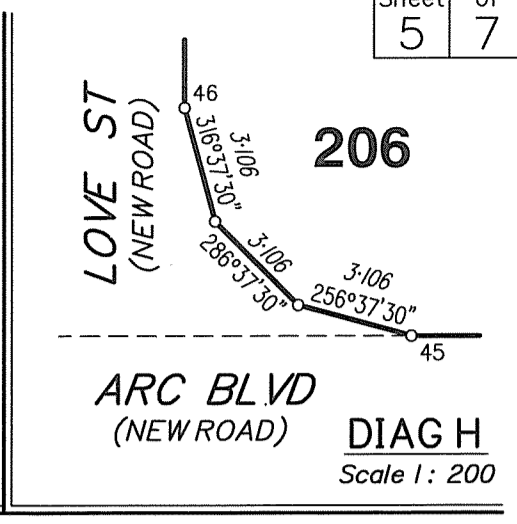
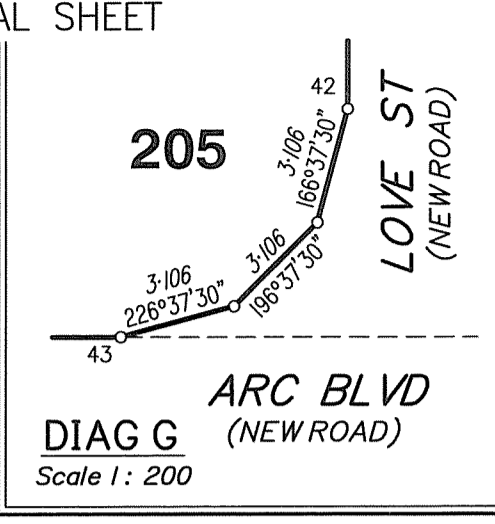
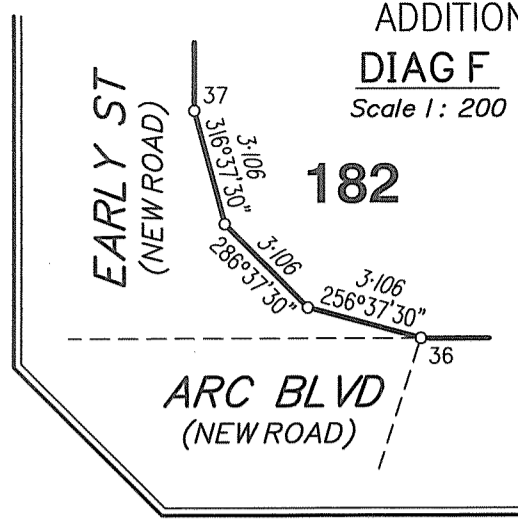
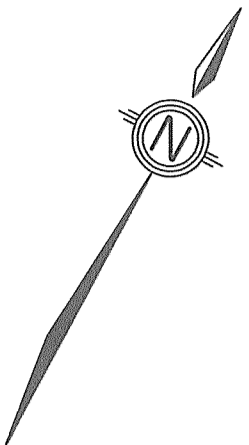
Scale 1 : 500 - Lengths are in Metres.



Insert Plan Number **SP333954**

State copyright reserved.

DRAFTED: SS DIGITAL DRAFTING 20361

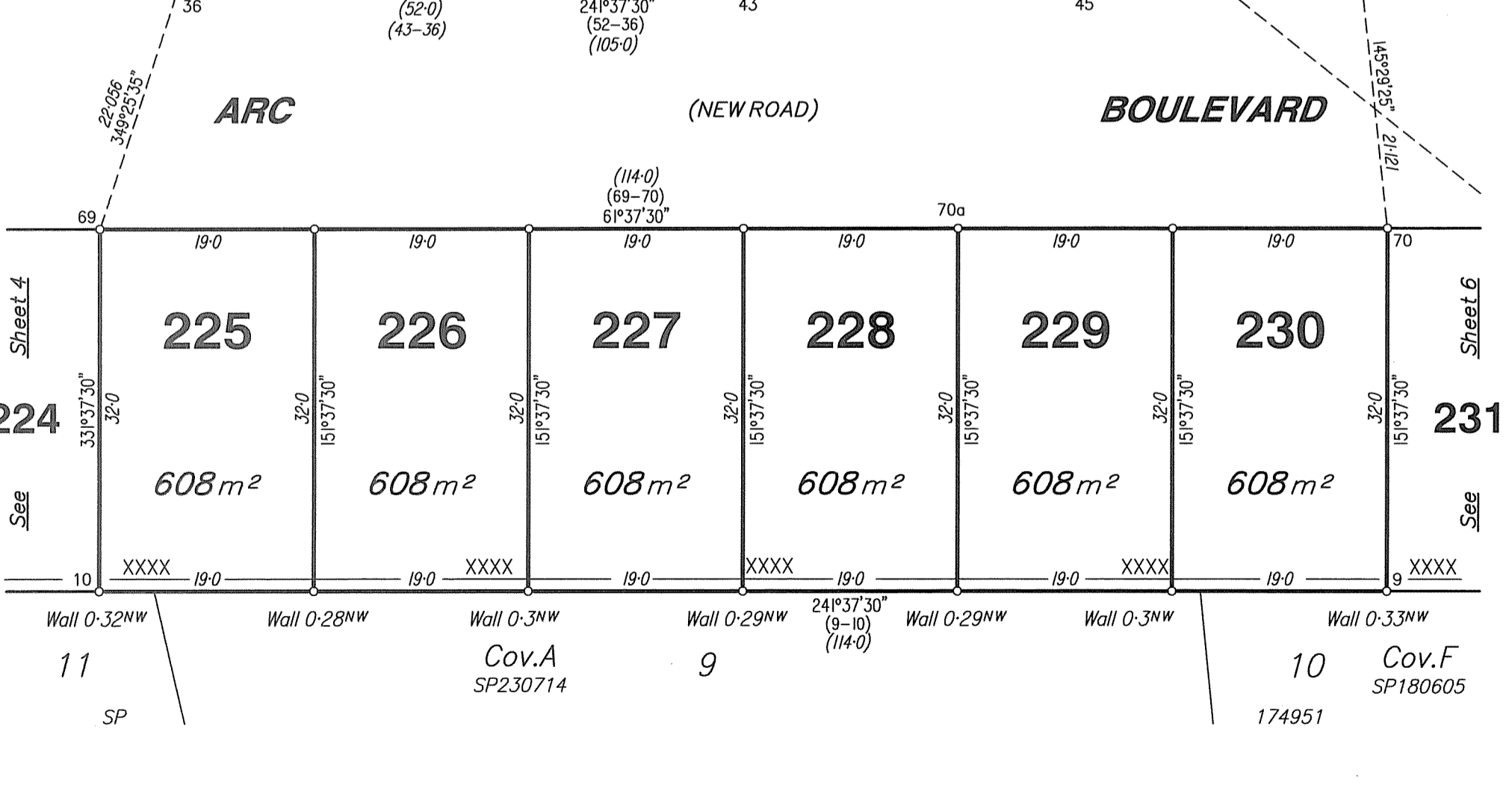
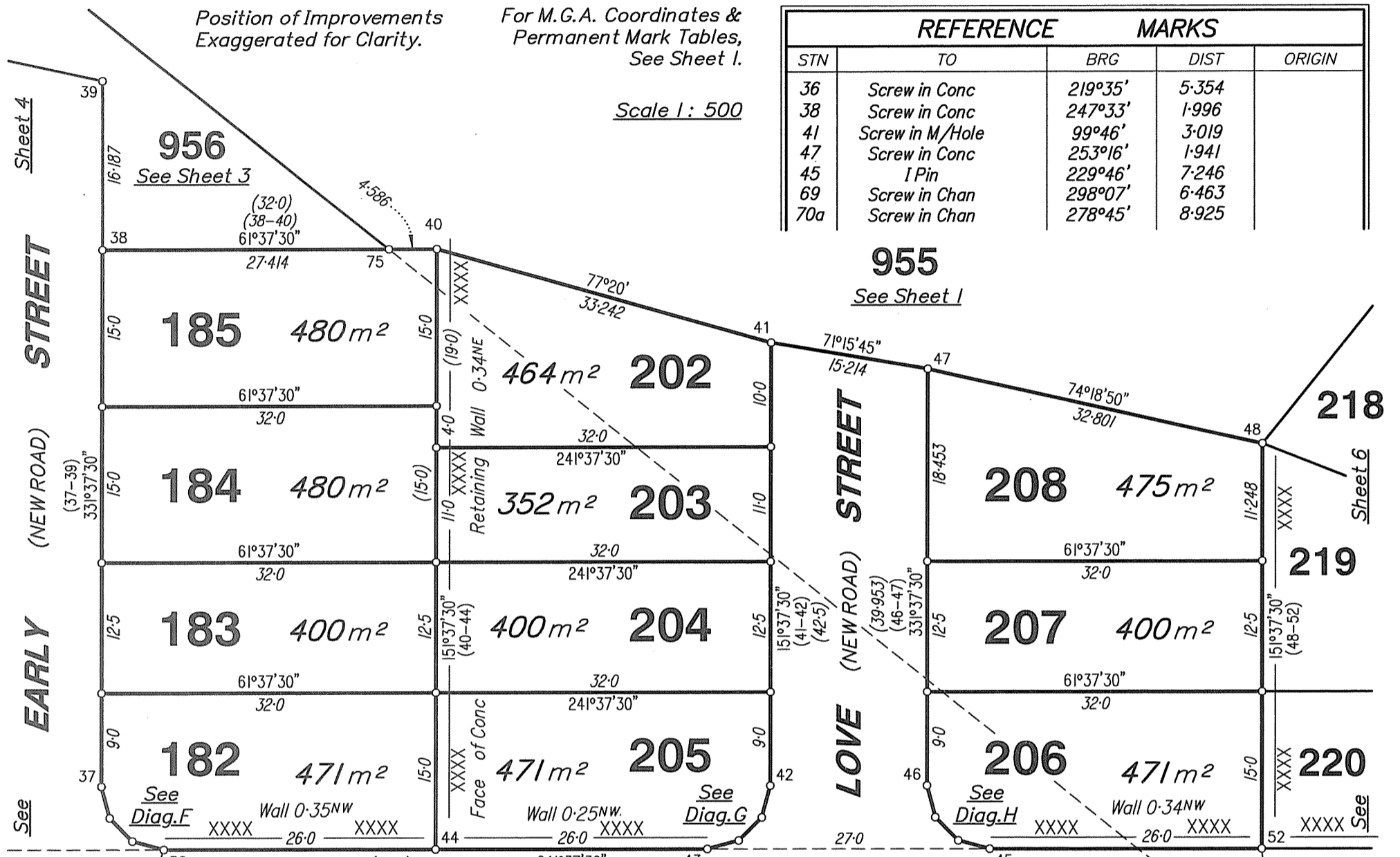


Position of Improvements Exaggerated for Clarity.

For M.G.A. Coordinates & Permanent Mark Tables, See Sheet 1.

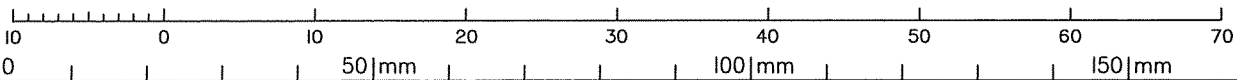
Scale 1 : 500

REFERENCE		MARKS		
STN	TO	BRG	DIST	ORIGIN
36	Screw in Conc	219°35'	5.354	
38	Screw in Conc	247°33'	1.996	
41	Screw in M/Hole	99°46'	3.019	
47	Screw in Conc	253°16'	1.941	
45	I Pin	229°46'	7.246	
69	Screw in Chan	298°07'	6.463	
70a	Screw in Chan	278°45'	8.925	



Scale 1 : 500 - Lengths are in Metres.

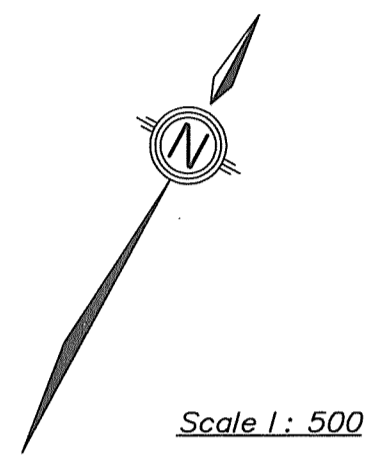
State copyright reserved.



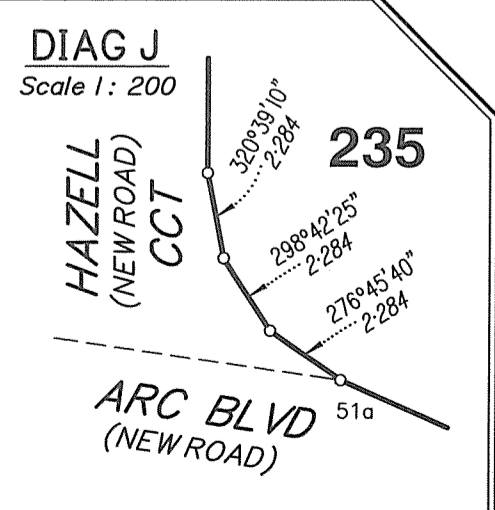
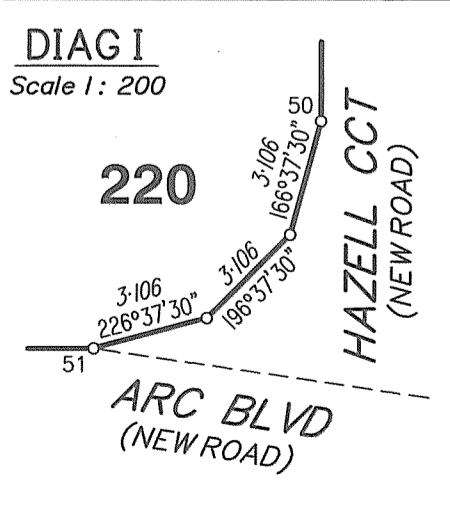
Insert Plan Number **SP333954**

DRAFTED: SS DIGITAL DRAFTING 20361

REFERENCE		MARKS		
STN	TO	BRG	DIST	ORIGIN
2	Screw in Conc	74°19'	8-621	
2	Screw in Chan	73°26'10"	24-249	
3	Screw in Chan	72°09'40"	20-5	
3	GI Nail in Bit	104°05'	26-359	
4	OIP	100°57'	0-9	IS285982
4	O.Nail in M/H Surround (New Ref)	61°45'	28-085	SP174951
6	O.Screw in Kb	51°05'	12-726	SP174951
6	OIP (Not Srchd)	86°46'	35-747	SP174951
8	OIP	334°21'05"	1-831	RP229068



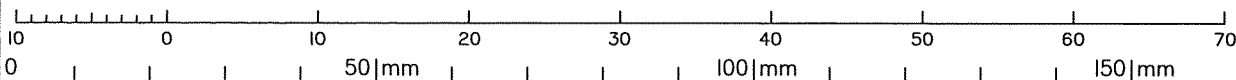
REFERENCE		MARKS		
STN	TO	BRG	DIST	ORIGIN
51	Screw in Conc	113°11'	4-375	
51a	Screw in M/Hole	270°10'	7-132	
62a	Screw in Conc	329°55'	3-68	
67	IPin	132°55'	1-208	
71	Screw in Chan	24°32'	8-463	
73a	Screw in BSG Trap	326°12'	4-727	



Position of Improvements Exaggerated for Clarity.

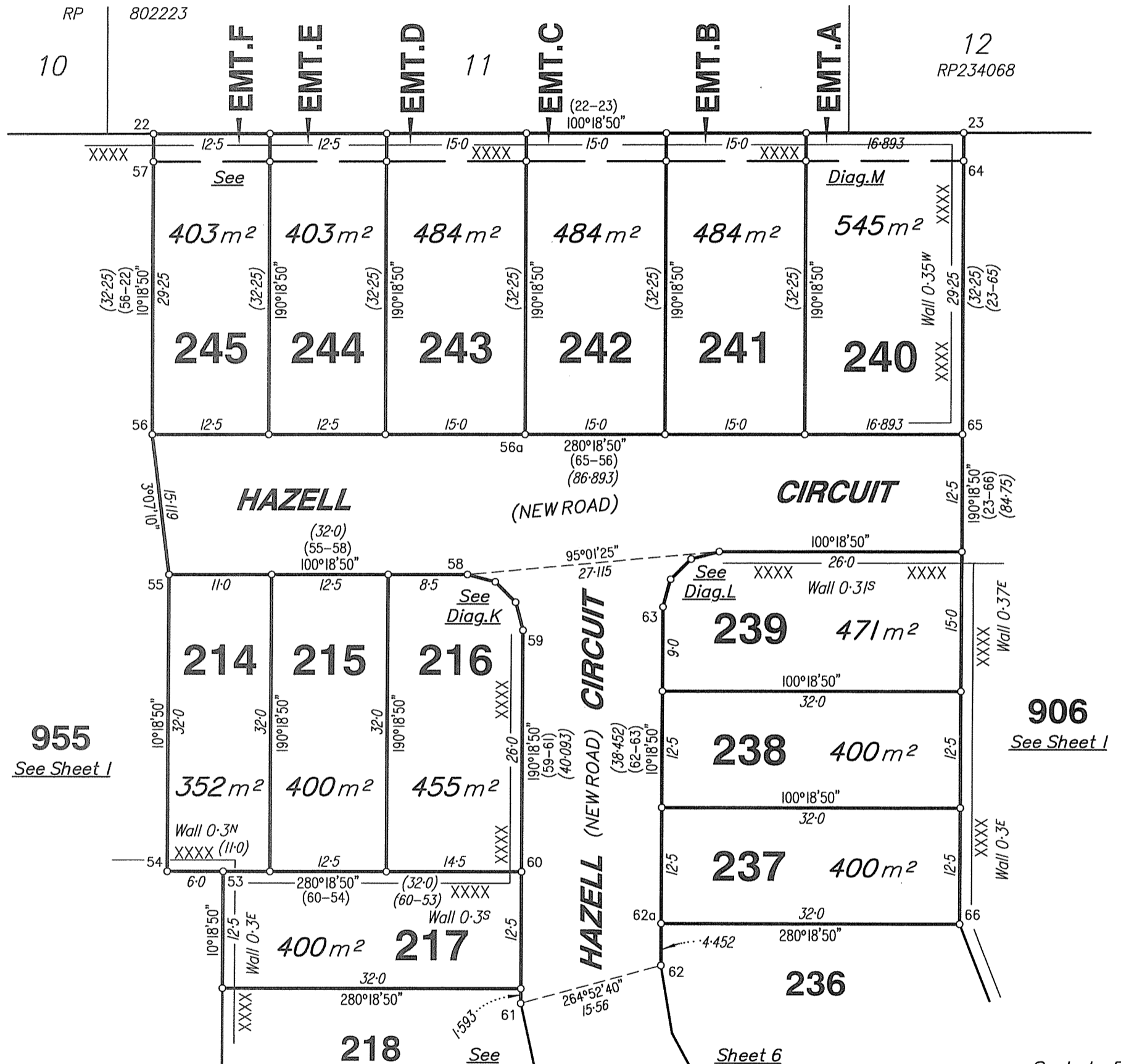
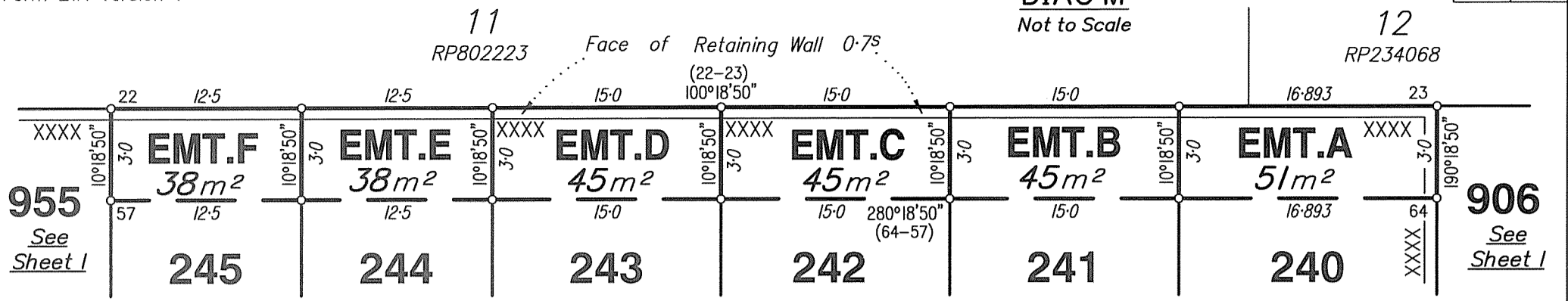
For M.G.A. Coordinates & Permanent Mark Tables, See Sheet 1.

Scale 1 : 500 - Lengths are in Metres.



HANLIN PLACE

State copyright reserved.
Insert Plan Number **SP333954**

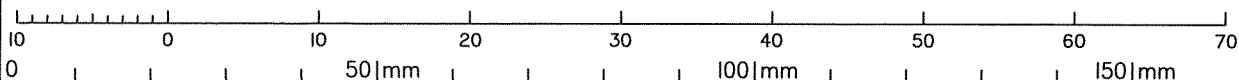
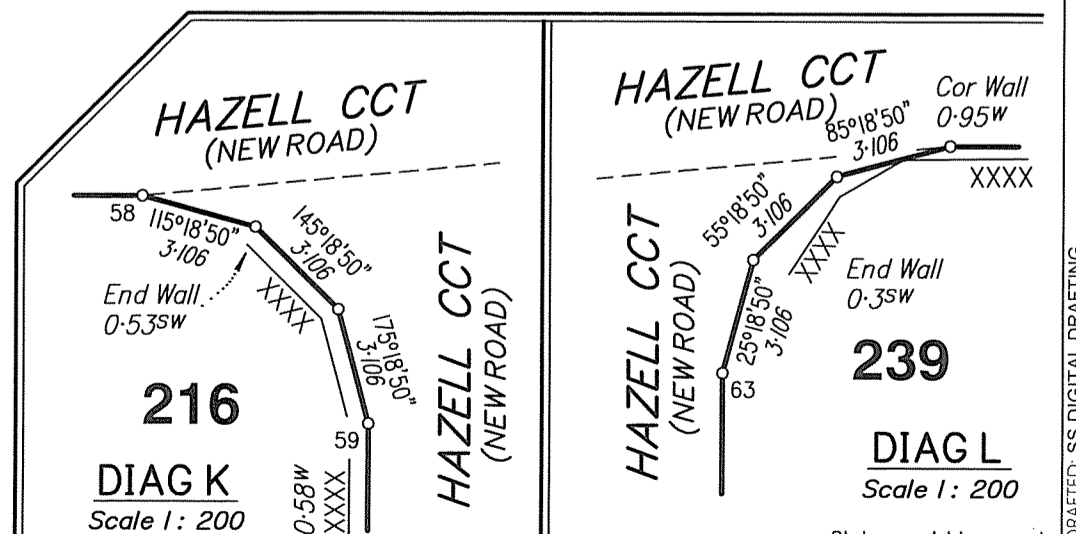


Position of Improvements Exaggerated for Clarity.

For M.G.A. Coordinates & Permanent Mark Tables, See Sheet 1.

REFERENCE		MARKS		
STN	TO	BRG	DIST	ORIGIN
56	Screw in Conc	132°48'	2.565	
56a	Screw in Conc	171°47'	1.938	
59	Screw in BSG Trap	24°58'	6.727	
62a	Screw in Conc	329°55'	3.68	
63	I Pin	3°40'	6.887	
65a	Screw in Conc	259°59'20"	17.746	

Scale 1: 500 - Lengths are in Metres.



Insert Plan Number **SP333954**